

# GCSE REVISION AND INDEPENDENT STUDY BOOKLET

Name: \_\_\_\_\_

Tutor: \_\_\_\_\_

A	MON	TUES	WEDS	THURS	FRI
1					
2					
3					
4					
5					

B	MON	TUES	WEDS	THURS	FRI
1					
2					
3					
4					
5					

Glue your timetable onto this front cover

## Autumn Term 2023-24

Hello,

Welcome to The Purbeck School **GCSE Revision and Independent Study** booklet. We hope that this will help you reach your potential as a student and also be a guide for your parents to help support your revision whilst you study your GCSEs.

Each subject area has put together summary of what you could do to support your own revision. Information will include:

- How you are assessed in each subject
- What revision activities you must be completing each week to prepare for your exams
- What extra revision activities you could be completing each week to prepare for your exams
- How you can get help and support

They have also created videos to support you prepare for examinations in each subject. These can be found here:

- [www.purbeck.dorset.sch.uk/information/exams/revision](http://www.purbeck.dorset.sch.uk/information/exams/revision)

Remember that there are some basic strategies before you even begin...

- **Don't get distracted** – try to have a quiet place that you are comfortable in and are able to revise uninterrupted;
- **Be organised**; ensure that you are covering all of your subjects – not just the subjects or subject areas that you enjoy – a **revision timetable** will help with this;
- Be realistic with a revision timetable – when are you able to revise – what is the best time of day that works for you;
- **Be active with your revision** – just reading through notes or having a book open is not revision – how are you embedding the knowledge (mind-maps/ writing revision cards/past papers);
- **Test yourself** – and use your parents/family/friends to help you;
- **Know the structure of the papers and the mark schemes** – this is one of the very best ways to organise your learning – know what types of question you will be asked and how you should be answering them.

Remember that this is your future. You need to be prepared and no-one else can do this for you.

You should be completing home learning to a high standard every week. If you have no home learning then complete the activities within this booklet. We would recommend that you should be studying for at least one hour every day.

Good luck – we know you can do it!

Carl Morris  
Deputy Headteacher  
The Purbeck School

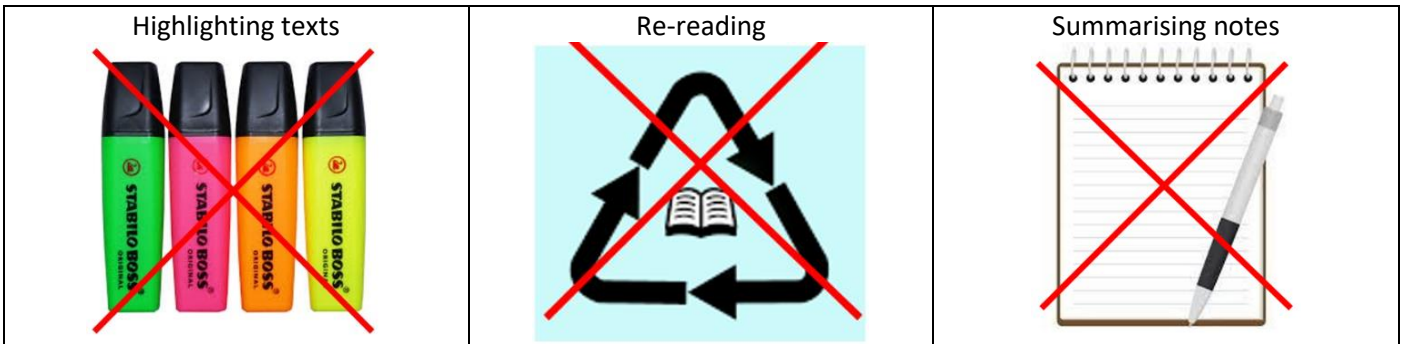
Page 3	How to revise: Six Strategies for Effective Revision
Page 4	Top revision tips!
Page 5	The Learning Scientists
Page 6	Revision Timetable: plan your revision
Page 7 →	Subject Self-Directed Study activities...

- English Language
- English Literature
- Mathematics
- Biology
- Chemistry
- Combined Science
- Physics
- Art
- Business Studies
- Computing
- Design Technology
- Drama
- Food Technology
- French
- Geography
- History
- Media Studies
- Photography
- PRE
- Spanish

At The Purbeck School we want to support our students and make sure they are using study strategies to support their revision, which work – based on educational research.

There are a number of common techniques that have been shown to have very little impact on learning – and so should be avoided:

## Not effective revision:

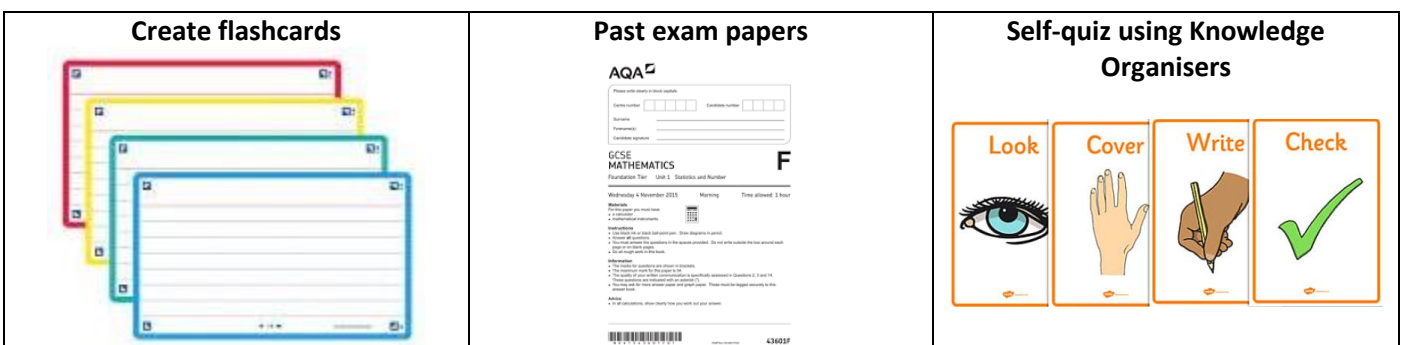


We often use these techniques because they are low stress. They don't really challenge us, but they make us feel good, because we are doing something. The truth is though, whilst it may keep you busy and stop you feeling guilty, it doesn't really help you learn!

## Effective revision:

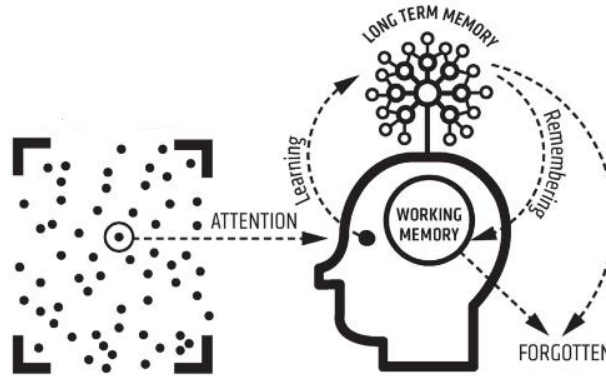
**The way we remember things is by having to think hard about something and recall it from our memory.  
The more we do this, the higher the chances of us remembering something.**

Practice testing is a common high impact way of revising. Here are some methods...



Be proactive and get feedback on each practice test you take in order to improve!

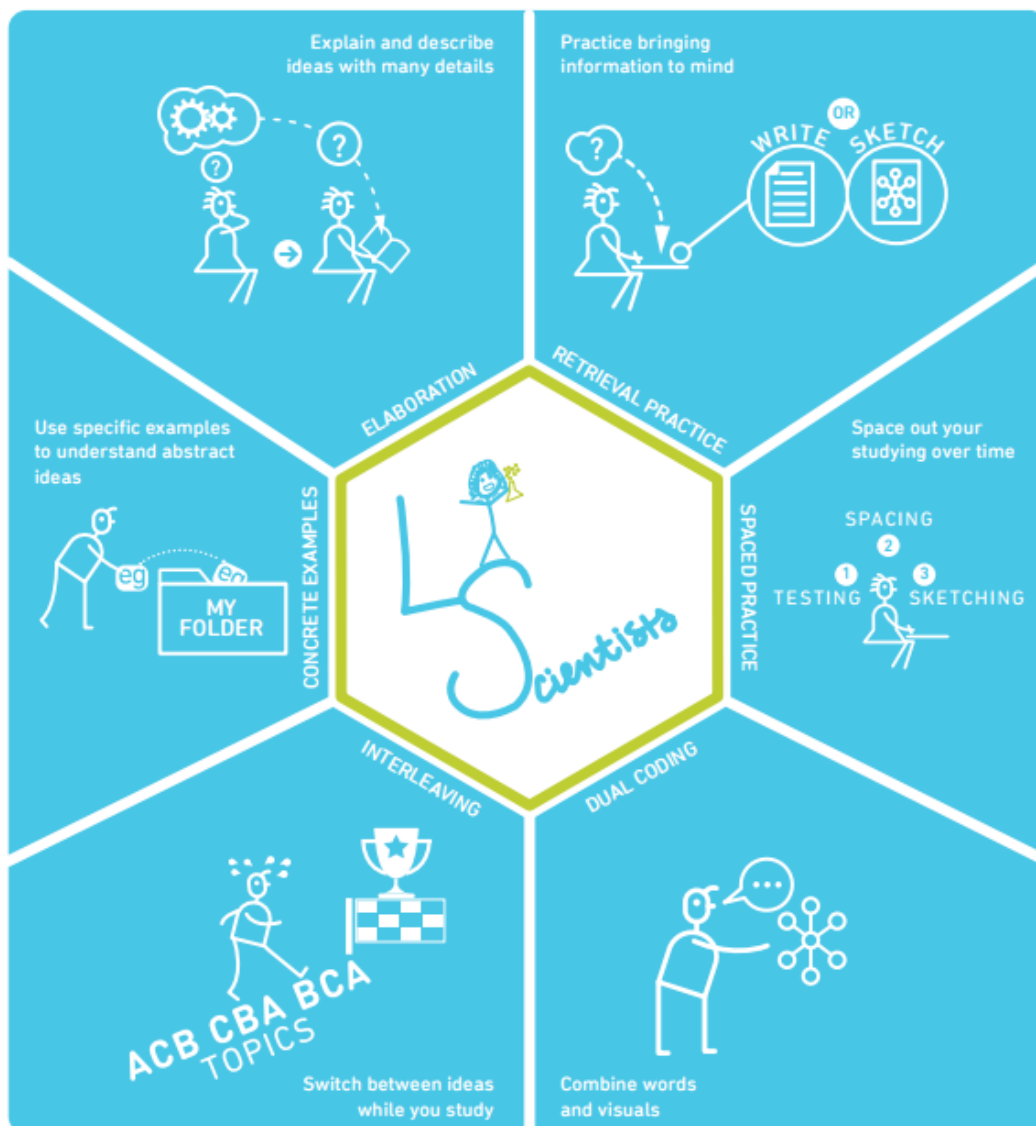
# TOP REVISION TIPS



<p><b>SPACED PRACTICE</b></p>	<p>Spaced practice is a study technique where you review material in intervals over a long period of time.</p> <ul style="list-style-type: none"> <li>• Plan short and frequent review sessions</li> <li>• Review over an extended period of time</li> <li>• Include old content with new information</li> </ul>
<p><b>RETRIEVAL PRACTICE</b></p>	<p>The act of retrieval, or bringing information to mind, strengthens our memory.</p> <ul style="list-style-type: none"> <li>• Practise past exam papers</li> <li>• Question and answer using flashcards</li> <li>• Self-quiz using Look, Cover, Write, Check</li> <li>• Create mind maps to link concepts</li> </ul>
<p><b>MINDSET</b></p>	<p>Unlock your potential by having a positive mindset and a genuine desire to learn and do well.</p> <ul style="list-style-type: none"> <li>• Engage in all lessons</li> <li>• Plan time at home to revise</li> <li>• Learn from mistakes</li> <li>• Work hard!</li> </ul>
<p><b>SUPPORT</b></p>	<p>Actively seek out support from everyone around you.</p> <ul style="list-style-type: none"> <li>• Ask your parents for a quiet study space at home</li> <li>• Ask for help on exam anxiety from the Nest</li> <li>• Ask your subject teachers for help on gaps in your knowledge and skills</li> </ul>
<p><b>ATTENDANCE</b></p>	<p>Attending school every day is vital – every lesson counts!</p> <ul style="list-style-type: none"> <li>• Poor attendance increases gaps in your knowledge</li> <li>• Maximise time with your expert teachers</li> <li>• Revise with your friends.</li> <li>• Increase attendance → Increase exam results!</li> </ul>

A group of cognitive psychologists from the USA, based in the University of Massachusetts, called [‘The Learning Scientists’](#) suggest six evidence informed approaches to studying, that can help students to revise:

1. **Elaboration** – explaining ideas in detail.
2. **Retrieval Practice** – practice ‘remembering’ what they have been taught.
3. **Spaced practice** – spacing out your studying over time.
4. **Dual coding** – combining pictures and words to help you remember things.
5. **Interleaving** – switching between the topics that you study.
6. **Concrete examples** – using specific examples to understand abstract ideas.





# PLANNING YOUR REVISION

Create revision calendars similar to these to block out times for your revision each day...

## During term time

You will need to fit in your revision with your school work that you are still doing. At this stage smaller amounts of revision are more likely to be more effective. Assign a total of 2 hours a night on revision (4 slots below). Don't forget to plan family time and down time to relax. Don't get too exhausted!

	<b>3.30 – 4.00</b>	<b>4.00 – 4.30</b>	<b>4.30 – 5.00</b>	<b>5.00 – 5.30</b>	<b>5.30 – 6.00</b>	<b>6.00 – 6.30</b>	<b>6.30 – 7.00</b>	<b>7.00 – 7.30</b>
<b>Mon</b>								
<b>Tues</b>								
<b>Weds</b>								
<b>Thurs</b>								
<b>Fri</b>								

## During weekends and holidays

Split your day into two – block out a morning session and an afternoon session:

	<b>9.00 – 9.30</b>	<b>9.30 – 10.00</b>	<b>10.00 – 10.30</b>	<b>10.30 – 11.00</b>	<b>11.00 – 11.30</b>	<b>11.30 – 12.00</b>
<b>Morning</b>						
	<b>2.00 – 2.30</b>	<b>2.30 – 3.00</b>	<b>3.00 – 3.30</b>	<b>3.30 – 4.00</b>	<b>4.00 – 4.30</b>	<b>4.30 – 5.00</b>
<b>Afternoon</b>						



**How am I assessed at GCSE?**

- Paper 1: Explorations in creative reading and writing
- Paper 2: Writers' viewpoints and perspectives
- Non-exam assessment: Speaking exam

Both paper 1 and paper 2 are split into two sections – reading and writing – each worth 40 marks.

**What revision activities **must** I complete each week?**

For both Paper 1 and Paper 2, use the information in your knowledge organiser to ensure that you have memorised the answers to the following questions:

- What is Question 1 assessing? How many marks is it worth? How long do I have to complete it?
- What is Question 2 assessing? How many marks is it worth? How long do I have to complete it?
- What is Question 3 assessing? How many marks is it worth? How long do I have to complete it?
- What is Question 4 assessing? How many marks is it worth? How long do I have to complete it?
- What is Question 5/6 assessing? How many marks is it worth? How long do I have to complete it?

**What extra revision activities **could** I complete each week?****For Paper 1:**

- Open a novel (fiction) on any page. Choose a paragraph that doesn't involve much speech. Explain how the writer has used language to create effects on the reader. Try to use terminology.
- Open a novel (fiction) on any page. Choose a series of paragraphs (4 or 5) explain how the writer has structured their writing and the effects that this structure may have on the reader.
- Write a side of descriptive writing. Now highlight and label all the language features you have used,

**For Paper 2:**

Choose an article from here: [www.theguardian.com/uk/commentisfree](http://www.theguardian.com/uk/commentisfree).

- Write a summary of the writer's viewpoint or perspective on the topic they are writing about.
- Write an explanation of how the writer has used language to influence the reader.
- List the explicit information outlined in the article.
- List some of the implicit information in the article.

Ask your teacher for a past paper. Bring it home and complete in timed conditions. Get your teacher to look at the paper with you and tell you where you could improve.

**How can I get help and support?**

- Please go and see your English teacher.
- Come to Study Plus (every Tues – Thurs 3.10 – 4.10pm in café)

**Contact:** [tmcnaughton@purbeck.dorset.sch.uk](mailto:tmcnaughton@purbeck.dorset.sch.uk)

**How am I assessed at GCSE?**

- Paper 1: Shakespeare and the 19th-century novel
- Paper 2: Modern texts and poetry

Remember – to pass an English Literature GCSE you need to have a really strong knowledge of:

- An Inspector Calls
- The Conflict Poetry
- Romeo and Juliet
- The Sign of Four

**What revision activities **must** I complete each week?**

- Spend 45 mins re-reading one of your texts to further familiarise yourself with plot, character and key events.
- Draw a timeline of key events that occur in one of the set texts that you have studied.
- Memorise 5 key quotations from each of the set texts you have studied.
- Create a mind map that helps to explain the context of each of the set texts that you have studied.
- Spend 45 mins reading through a study guide for the set text. Write up notes on new information that you learn.
- Spend 45 mins self-quizzing, using 'look, cover, write, check', with your knowledge organiser.
- Create a mind map for each character in the text you have studied.

**What extra revision activities **could** I complete each week?**

- Write down everything you remember about one of the texts you have studied. Compare what you have written to the information in the knowledge organiser. For the areas you are missing, use your revision guides or the internet to find out more information.
- Write down five key quotations from one of the texts (or poems) that you have studied and then spend time analysing these quotations and explaining why they are important making sure that you comment on effect on readers and use subject terminology.
- Create a list of subject terminology and definitions e.g. simile. This will help you use necessary terminology when analysing poems or texts.
- Create a series of prompt cards by using the knowledge organisers for each text. On one side write the topic area and on the back the information from the organiser. Now test yourself by looking at the topic and seeing if you remember everything on the back.
- Memorise the key quotations from 15 poems and the set texts you have studied.

Spend 45 minutes answering one of the following questions:


1. Explain how (name of writer) presents the character of (choose character) in (name text).
2. Explain how (name of writer) presents the theme of (choose theme) in (name text).
3. Compare how (two poems you have studied) present the theme of conflict.
4. Compare how (two poems you have studied) present the theme of power.

**How can I get help and support?**

- Please go and see your English teacher.
- Come to Study Plus (every Tues – Thurs 3.10 – 4.10pm in café)

**Contact:** [tmcnaughton@purbeck.dorset.sch.uk](mailto:tmcnaughton@purbeck.dorset.sch.uk)

## How am I assessed at GCSE?

Foundation (grades 1-5)	<b>Paper 1</b> Non-calculator 33.3% weighting 1 hour and 30 minutes 80 marks 	<b>Paper 2</b> Calculator 33.3% weighting 1 hour and 30 minutes 80 marks 	<b>Paper 3</b> Calculator 33.3% weighting 1 hour and 30 minutes 80 marks 
	<b>Higher</b> (grades 4-9)	<b>Paper 1</b> Non-calculator 33.3% weighting 1 hour and 30 minutes 80 marks 	<b>Paper 2</b> Calculator 33.3% weighting 1 hour and 30 minutes 80 marks 

## What revision activities **must** I complete each week?

- Revise your weekly *knowledge quiz*.
- Complete all *Sparx Maths* tasks set by your teacher.
- Complete *GCSE practice exam papers* under timed conditions.

## What extra revision activities **could** I complete each week?

- Complete additional tasks on *Sparx Maths* from the *Independent Learning*, *Target* or *XP Boost* sections.
- Revise and improve your *End of Unit Key Question Assessment*
- Use *Exam Practice Workbooks* to practice topic specific exam questions
- Use *flashcards* to learn all the important mathematical knowledge and skills.

## How can I get help and support?

- Please go and see your Maths teacher.
- Come to Study Plus (every Tues – Thurs 3.10 – 4.10pm in café)
- Come to our Maths Support Sessions (every lunchtime, room M13).

Contact: [cmorris@purbeck.dorset.sch.uk](mailto:cmorris@purbeck.dorset.sch.uk)

## How am I assessed at GCSE?

- Your course is 100% coursework.
- Your sketchbook and artworks are marked towards your overall GCSE grade.
- We use OCR's assessment objectives of Develop/Explore/Record/Present to mark your work, this includes writing and physical artwork.
- You will produce two sketchbooks and final pieces for gallery shows.
- Instead of 'revision', you should complete the following weekly activities to add to your coursework...

## What revision activities **must** I complete each week?

- You should produce a double sketchbook page every week.
- Making artwork – this could be copies of your artists' work or your own pieces.
- Photoshoots to inspire your artwork – these must be as skilled as your art because they will also be marked as part of the process.
- Writing about your own work – use the guidance sheets provided.
- Creating research/analysis pages about artists to inspire your project – use the guidance sheet provided.
- Conducting further visual research to help inspire your ideas – look on gallery websites, the purbeckarts Instagram, follow #gcseart on Instagram, listen to podcasts, visit galleries – try to be conscious about accessing the arts to widen your horizons.

## What extra revision activities **could** I complete each week?

- You could create further artworks to practice your technical skills.
- You could watch YouTube tutorials for new processes or editing techniques.
- You could email any images or typed work to our Arts Technician.
- You could email you teachers asking them to prepare materials or surfaces for your lesson.

## How can I get help and support?

- Email staff at the below addresses.
- Come to the Art Department before school, during break/lunch or after school.
- Attend Wednesday Art club.

### **Contact:**

[aclarke@purbeck.dorset.sch.uk](mailto:aclarke@purbeck.dorset.sch.uk) – Head of Art and Photography

[mchengadu@purbeck.dorset.sch.uk](mailto:mchengadu@purbeck.dorset.sch.uk) – Teacher of Art

[swatson@purbeck.dorset.sch.uk](mailto:swatson@purbeck.dorset.sch.uk) – Teacher of Art and Photography

[jlummes@purbeck.dorset.sch.uk](mailto:jlummes@purbeck.dorset.sch.uk) – Arts Technician

## How am I assessed at GCSE?

- **Biology Paper 1** (Topics B1 – B9 Cell Biology, Organisation, Infection and response, Bioenergetics) - 100 marks, 50% of GCSE, length of paper 1hr 45mins.
- **Biology Paper 2** (Topics B10 – B18: Homeostasis and response; Inheritance, variation and evolution; and Ecology) - 100 marks, 50% of GCSE, length of paper 1hr 45mins.
- Both papers will contain questions on the required practical's covered and will consist of multiple choice, structured, closed short answer and open response questions.

## What revision activities **must** I complete each week?

- Seneca home learning – fortnightly
- 6-mark exam question – fortnightly

## What extra revision activities **could** I complete each week?

- Revision using CGP revision guide is recommended (Title: AQA GCSE Biology).
- Use the resources referenced in the Science Online Learning Guide – this is available in the S12 Students area of Teams.
- [www.freesciencelessons.co.uk](http://www.freesciencelessons.co.uk) contains useful revision videos for each topic, as well as downloadable workbooks.
- Practice past paper questions and self-mark using the mark schemes. Using mark schemes to learn how to word answers and how to interpret questions is a very good way to revise. These can be found on the AQA website:  
[www.aqa.org.uk/subjects/science/gcse/biology-8461/assessment-resources](http://www.aqa.org.uk/subjects/science/gcse/biology-8461/assessment-resources)

## How can I get help and support?

- Contact your Biology teacher.
- Contact Mrs Robinson (Head of Biology).
- Attend Seneca support sessions after school on Thursday in S9

**Contact:** [lorobinson@purbeck.dorset.sch.uk](mailto:lorobinson@purbeck.dorset.sch.uk)

## How am I assessed at GCSE?

- Paper 1 (1BS0/01): 'Investigating Small Business'
  - Topics: 1.1 Enterprise and entrepreneurship, 1.2 Spotting a business opportunity, 1.3 Putting a business idea into practice, 1.4 Making the business effective, 1.5 Understanding external influences on business.
  - Quantitative skills
    - Calculation • percentages and percentage changes • revenue, costs and profit • cash-flow forecasts, including total costs, total revenue and net cash flow and finally,
    - Interpretation • information from graphs and charts • market data, including market share, changes in costs and changes in prices
- Paper 2 (1BS0/02): 'Growing the Business'
  - Topics: Topic 2.1 Growing the business, Topic 2.2 Making marketing decisions, Topic 2.3 Making operational decisions, Topic 2.4 Making financial decisions, Topic 2.5 Making human resource decisions.
  - Quantitative skills
    - Calculation; • averages • revenue, costs and profit • gross profit margin and net profit margin ratios • average rate of return and finally
    - Interpretation • information from graphs and charts • market data, including market share, changes in costs and changes in prices

## What revision activities **must** I complete each week?

- Use your KO (digital copy also on teams) to become better accustomed to using key terminology.
- Create flash cards / revision material for each topic including key terms, formulas and other useful information you have identified from your revision.
- Seneca work set by your teacher (or home learning that has been set – will be revision focused).

## What extra revision activities **could** I complete each week?

- Complete specific exam questions; [click here](#) (under exam materials) with a different focus each time; multiple choice questions, 3-mark questions, 6-mark non-context, PICC case studies (*identify their product, what is the industry like that the business operates in, who are their competition and how do they differ as well as who are their customers and what they value*).
- Planning answers to questions.
- Complete a past examination paper then self-assess using the mark-scheme (*let your teacher have a look for feedback and guidance*). [Click here or on Teams](#).
- Seneca learning – take a topic, revise and then test yourself; [click here](#).
- Use your revision guide and workbook to revise a topic and then test yourself by answering non-context questions (*check you have fully developed your responses*).

## How can I get help and support?

- Pearson Edexcel GCSE Business Specification and support: [Click here](#).
- Materials on Teams under Files.
- BBC GCSE Bitesize Business: [click here](#)
- Pearson Revise revision guide and workbook (available on Amazon – Guide: [click here](#), Workbook: [click here](#))

**Contact:** [adarley@purbeck.dorset.sch.uk](mailto:adarley@purbeck.dorset.sch.uk)

## How am I assessed at GCSE?

- **Chemistry Paper 1** (Topics C1 Atomic Structure, C2 the Periodic Table, C3 Structure & Bonding, C4 Calculations, C5 Chemical Changes, C6 Electrolysis, C7 Energy Changes) - 100 marks, 50% of GCSE, length of paper 1hr 45mins
- **Chemistry Paper 2** (Topics C8 Rates & Equilibria, C9 Crude Oil, C10 Organic Reactions, C11 Polymers, C12 Chemical Analysis, C13 the Earth's Atmosphere, C14 the Earth's Resources, C15 Using Earths Resources) - 100 marks, 50% of GCSE, length of paper 1hr 45mins
- Note: Paper 2 may also contain aspects of C1 – C4, as these are considered the fundamental aspects of GCSE Chemistry.
- Both papers will contain questions on the required practical's covered and will consist of multiple choice, structured, closed short answer and open response questions

## What revision activities **must** I complete each week?

- Seneca home learning – fortnightly
- Past Paper question booklet – weekly

## What extra revision activities **could** I complete each week?

- Use the resources referenced in the Science Online Learning Guide – this is available in the S12 Students area of Teams  
<https://purbeckschool.sharepoint.com/:w:/s/S11Students/ETVhuuzeqHVDmJIYJPFQ6sBBBRgbqNvZ761c6kNBbVrOQ?e=Wq3x1l>
- Revision using CGP revision guide is recommended (Title: AQA GCSE Chemistry).
- [www.freesciencelessons.co.uk](http://www.freesciencelessons.co.uk) contains useful revision videos for each topic, as well as downloadable workbooks.
- Practice past paper questions and self-mark using the mark schemes. Using mark schemes to learn how to word answers and how to interpret questions is a very good way to revise. These can be found on the AQA website: <https://www.aqa.org.uk/subjects/science/gcse/chemistry-8461/assessment-resources>

## How can I get help and support?

- Contact your Chemistry teacher.
- Contact Mr Foyle (Head of Chemistry).
- Attend Seneca support sessions after school Tuesday – Thursday.
- Attend Chemistry support sessions after school Tuesday.

**Contact:** [jfoyle@purbeck.dorset.sch.uk](mailto:jfoyle@purbeck.dorset.sch.uk)



## How am I assessed at GCSE?

- **Biology Paper 1:** Cell Biology, Organisation, Infection and response, Bioenergetics
- **Biology Paper 2:** Homeostasis and response; Inheritance, variation and evolution; and Ecology
- **Chemistry Paper 1:** Atomic structure and the periodic table; Bonding, structure, and the properties of matter; Quantitative chemistry; Chemical changes; and Energy
- **Chemistry Paper 2:** The rate and extent of chemical change; Organic chemistry; Chemical analysis; Chemistry of the atmosphere; and Using resources. Paper 2 may also contain aspects of Atomic structure and the periodic table; Bonding, structure, and the properties of matter; Quantitative chemistry
- **Physics Paper 1:** Energy; Electricity; Particle model; Atomic structure
- **Physics Paper 2:** Forces; Waves; Magnetism & Electromagnetism
- All papers are 70 marks, 17% of GCSE and 1hr 15mins long
- All papers will contain questions on the required practical's covered and will consist of multiple choice, structured, closed short answer and open response questions.

## What revision activities **must** I complete each week?

- Seneca home learning – fortnightly
- Past Paper questions – fortnightly

## What extra revision activities **could** I complete each week?

- Use the resources referenced in the Science Online Learning Guide – this is available in the S12 Teams Students area: <https://purbeckschool.sharepoint.com/:w:/s/S11Students/ETVhuuzeqHVDmJIYJPFRQ6sBBBRgbqNvZ761c6kNBbVrOQ?e=Wq3x1I>
- Revision using CGP revision guide is recommended (Title: AQA GCSE Combined Science).
- [www.freesciencelessons.co.uk](http://www.freesciencelessons.co.uk) contains useful revision videos for each topic, as well as downloadable workbook
- Practice past paper questions and self-mark using the mark schemes. Using mark schemes to learn how to word answers and how to interpret questions is a very good way to revise. These can be found on the AQA website: [www.aqa.org.uk/subjects/science/gcse/combined-science-trilogy-8464/assessment-resources](http://www.aqa.org.uk/subjects/science/gcse/combined-science-trilogy-8464/assessment-resources)

## How can I get help and support?

- Contact your Science teacher.
- Contact Mr Foyle (Head of Science).
- Attend Seneca support sessions after school.

Contact: [jfoyle@purbeck.dorset.sch.uk](mailto:jfoyle@purbeck.dorset.sch.uk)



## How am I assessed at GCSE?

- Paper 1 (50%) Computer Systems – worth 80 marks.
- Paper 2 (50%) Computational thinking, algorithms and programming – worth 80 marks.
  - A significant portion of this paper is focused on examining your Python Programming skills.

## What revision activities **must** I complete each week?

- Keep your Revision Plan up to date.
  - Otherwise, you won't know if you have covered all the material
- Attempt a range of Advanced Questions on Smart Revise.
  - If you get the question wrong, make sure you correct it
- Work on Programming tasks in Python.
  - Use the examples on Time 2 Code. If you finish those, see me for more.

## What extra revision activities **could** I complete each week?

- Attempt to mind map a whole topic from a blank page
- Check it back to the specification to identify weak areas
- Practice past OCR exam papers – [www.ocr.org.uk/qualifications/gcse/computer-science-j277-from-2020/assessment](http://www.ocr.org.uk/qualifications/gcse/computer-science-j277-from-2020/assessment)

## How can I get help and support?

- Please go and see your subject teacher.
- Afterschool/lunchtime sessions can be arranged to cover your specific issues.

**Contact:** [tkeegan@purbeck.dorset.sch.uk](mailto:tkeegan@purbeck.dorset.sch.uk)

**How am I assessed at GCSE?**

- Your NEA non-exam assessment (coursework) is work 50% of your final grade.
- The remaining 50% of the final grade is the theory exam, which is marked out of 100.
  - Section A (20 marks), Section B (30 marks), Section C (50 marks)

**What revision activities **must** I complete each week?**

- Use the five 'Knowledge organisers' given to you in Y10; make detailed notes and use a variety of learning strategies to remember the knowledge.
  - Module 1: Working with timbers and metals
  - Module 2: Design and develop prototypes
  - Module 3: CAD and electronics
  - Module 4: Manufacturing processes
  - Module 5: Core technical principles
- For each module there is a Knowledge organiser, exam questions and lesson power points that contain all the information required for the exam. These can all be accessed on Teams and are in your Product Design folders.

**What extra revision activities **could** I complete each week?**

- Work through the past exam papers (these are available of the AQA website: [www.aqa.org.uk/exams-administration/exams-guidance/find-past-papers-and-mark-schemes](http://www.aqa.org.uk/exams-administration/exams-guidance/find-past-papers-and-mark-schemes))
- Use the AQA revision guide that you may have purchased or the revision cards.
- Seneca: Design and Technology: <https://app.senecalearning.com>
- Use the BBC Bitesize websites: Complete all the activities: Revise, activity/video and test, repeat until you are achieving 100% of each test.  
[www.bbc.co.uk/bitesize/subjects/zdn9jhv](http://www.bbc.co.uk/bitesize/subjects/zdn9jhv)

**How can I get help and support?**

- Please go and see your subject teacher.
- Go to Study club in D21 on a Tuesday lunchtime and/or Tuesday after school.

**Contact:** [sshepherd@purbeck.dorset.sch.uk](mailto:sshepherd@purbeck.dorset.sch.uk) [kceden@purbeck.dorset.sch.uk](mailto:kceden@purbeck.dorset.sch.uk)

### How am I assessed at GCSE?

<b>Component 1: 1DR0/01</b>	<b>Overview of assessment</b> - Internally assessed, externally moderated. <ul style="list-style-type: none"> <li>• Create, rehearse and perform a devised performance from a stimulus.</li> <li>• Written portfolio which reflects on and analyses and evaluates the development process and the effectiveness of the work created (recommended maximum 2000 words).</li> </ul>	40%
<b>Component 2: 1DR0/02</b>	<b>Overview of assessment</b> – Externally assessed by visiting examiner appointed by Pearson Edexcel. <ul style="list-style-type: none"> <li>• Students will perform either a monologue or duologue. These scripted extracts will need to be learnt by heart and will be performed to an audience.</li> <li>• Students are marked only on their performance skills.</li> </ul>	20%
<b>Component 3: 1DR0/03</b>	<b>Overview of assessment</b> – Written Examination 1 hour 45 minutes <b>Part A</b> <ul style="list-style-type: none"> <li>• Students will answer short and extended response based on an unseen extract from the chosen set text.</li> <li>• Students are not permitted to take their annotated texts into the examination, fresh copies of the extract will be provided.</li> </ul> <b>Part B</b> <ul style="list-style-type: none"> <li>• This section consists of <b>two</b> questions requiring students to analyse and evaluate a live theatre performance they have seen.</li> <li>• Students are allowed to take notes into the examination of up to a maximum of 500 words.</li> </ul>	40%

### What revision activities **must** I complete each week?

- Practise your monologue/duologue. Recording yourself on a phone/tablet so that you can watch back your work and make improvements.
- Revise timings for the C03 Exam
- Revise key subject terms for voice, physical skills, set, costume, lighting and sound.
- Revise background context on Arthur Miller, The USA and Communism in the 1950's.
- Revise your annotated The Crucible Act 2 exam booklet.
- Revise your 500 words Live Theatre notes.

### What extra revision activities **could** I complete each week?

- Re watch The Crucible or your live theatre production online.
- **Login:** <https://www.dramaonlinelibrary.com/custom-browse?docid=nationalTheatreCollection>  
**Username: 5MmY8Xmpb+**
- Mind-map/plan responses to practise exam questions.
- Complete practise exam questions to time.
- Read/revise sections of the CPG *GCSE Drama The Crucible Study Guide* ISBN:978 1 78294 965 7

### How can I get help and support?

- Attend extra rehearsals for CO2 on either a Monday or Wednesday Lunchtime.
- Attend GCSE Drama revision sessions on either Wednesday (The Crucible) or Thursday (Live Theatre) after school.

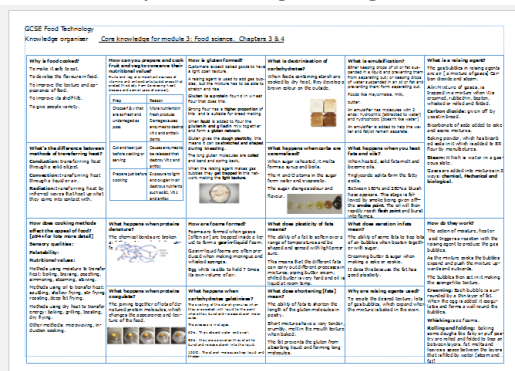
**Contact:** [cshannessy@purbeck.dorset.sch.uk](mailto:cshannessy@purbeck.dorset.sch.uk)

## How am I assessed at GCSE?

- Your NEA 1 & 2 coursework is 50% of your final grade:
  - NEA 1 (Food Science) is 15% of this; this is marked out of 30, 15 marks coming from practical investigations.
  - NEA 2 (Food Preparation) is 35% of the total GCSE; this is marked out of 70, of which 48 marks are awarded for your practical work in section B and D.
- The remaining 50% of the final grade is the theory exam (marked out of 100). This includes 20 multi-choice questions, each worth one mark and longer style questions with marks ranging from 2 to 12 per question. Topics covered in the exam are: Food safety, Nutrition, Food Science, Factors affecting food choice & Food Provenance.

## What revision activities **must** I complete each week?

- Use the 'Knowledge organisers' for each of your 5 exam modules given to you in lessons; make detailed notes and use a variety of learning strategies to remember the knowledge.



There are 5 exam preparation modules.

- Module 1: Food safety
- Module 2: Nutrition
- Module 3: Food Science
- Module 4: Factors affecting food choice
- Module 5: Food Provenance

- For each module there is a Knowledge organiser, exam questions and lesson power points that contain all the information required for the exam. These can all be accessed on Teams and are in your Food folders.
- Complete GCSE practice exam paper questions under timed conditions.

## What extra revision activities **could** I complete each week?

- Work through the AQA past exam papers: [www.aqa.org.uk/exams-administration/exams-guidance/find-past-papers-and-mark-schemes](http://www.aqa.org.uk/exams-administration/exams-guidance/find-past-papers-and-mark-schemes) (or you can ask your Food Teacher for some) answering all questions. Once this is done, you should use the mark scheme to mark your answers and re-answer the incorrect questions, revise/research, if necessary if you cannot answer the questions straight away.
- Use the AQA revision guide or the revision cards that you may have purchased.
- Seneca: Food preparation and nutrition: <https://app.senecalearning.com/>
- Use the online textbook to make your own set of notes/mind maps/revision cards on all the module topics. [www.illuminate.digital/aqafood](http://www.illuminate.digital/aqafood) , Username: SPUR3, Password: STUDENT3
- Use the BBC Bitesize websites: Complete all the activities: Revise, activity/video and test, repeat until you are achieving 100% of each test. [www.bbc.co.uk/bitesize/subjects/zdn9jhw](http://www.bbc.co.uk/bitesize/subjects/zdn9jhw)

## How can I get help and support?

- Your class teacher or another Food teacher.
- Study club in D21/24 on a Tuesday lunchtime and/or Tuesday after school.

Contact: [vschubert@purbeck.dorset.sch.uk](mailto:vschubert@purbeck.dorset.sch.uk) or [staylor@purbeck.dorset.sch.uk](mailto:staylor@purbeck.dorset.sch.uk)

## How am I assessed at GCSE?

- **Listening** (25%):
  - Foundation Tier: 35 minutes, 40 marks
  - Higher Tier: 45 minutes, 50 marks
- **Speaking** (25%) Non-exam assessment, 60 marks:
  - Foundation Tier: 7 – 9 minutes + preparation time (10 – 12 minutes)
  - Higher Tier: 10 – 12 minutes + preparation time (10 – 12 minutes)
- **Reading** (25%) 60 marks:
  - Foundation Tier: 45 minutes
  - Higher Tier: 1 hour
- **Writing** (25%):
  - Foundation Tier: 1 hour 5 minutes, 50 marks
  - Higher Tier: 1 hour 20 minutes, 60 marks

## What revision activities **must** I complete each week?

- Revision for your weekly knowledge vocabulary quizzing or homework sheet.
- Complete weekly Language Gym activities set.
- Learn your Speaking Booklet answers.
- Learn your Set Writing Expressions for the writing paper.

## What extra revision activities **could** I complete each week?

- Language Gym additional tasks – use the game room to search for topics or grammar points that you feel less confident with.
- Do timed writing tasks in exam conditions and give them to your teacher for feedback.
- Use Exam Practice Workbooks to practice topic specific exam questions. (We recommend the **CGP** GCSE AQA Complete Revision and Practise guide).

## How can I get help and support?

- Please go and see your French teacher.
- Come to Study and Revision sessions (see club timetables)
- Consult the BBC Bitesize website: [www.bbc.co.uk/bitesize/subjects/zhsvr82](http://www.bbc.co.uk/bitesize/subjects/zhsvr82)

**Contact:** [lwest@purbeck.dorset.sch.uk](mailto:lwest@purbeck.dorset.sch.uk)

## How am I assessed at GCSE?

- Paper 1: 'Our Natural World' - Topics: - Global Hazards, Changing Climate, Distinctive Landscapes and Physical rivers fieldwork (NOT Sustaining Ecosystems or Resource Reliance).
- Paper 2: 'People and Society' - Topics: - Urban Futures, Dynamic Development, UK in the 21st Century and Human urban fieldwork.
- Decision Making Paper - Range of questions involving all 6 topics covered.

## What revision activities **must** I complete each week?

- **Use** your green GCSE KO revision booklet (digital copy also on teams)– this includes: knowledge organisers, case studies, practice exam questions and the fieldwork section
  - Practise past exam questions from each unit from the booklet.
  - Create flash cards for your case studies.
  - Apply your case study knowledge to exam style questions.

## What extra revision activities **could** I complete each week?

- Planning answers to questions – and then get your teacher to check it for you!
- Learning command words – Describe, explain, evaluate, assess and to what extent.
- Flash cards – quick Q and A cards – this could be key terms or case study facts.
- Complete old past exam papers.
- Complete ZigZag papers from the cabinet in H27.

## How can I get help and support?

- Look up your green GCSE Geography booklet
- Look at the resources on Teams
- Look up your CPG revision guide
- Look up BBC Bitesize – Geography OCR B
- Come and ask your subject teacher
- Go to our lunchtime revision sessions

**Contact:** [eshenton@purbeck.dorset.sch.uk](mailto:eshenton@purbeck.dorset.sch.uk)

## How am I assessed at GCSE?

- Four exam papers:
  - Germany 1919-39 (1 hour)
  - Health and Medicine 500-now (1hr 15 mins)
  - USA 1929-2000 (45 mins)
  - Elizabethan England (1 hour)

## What revision activities **must** I complete each week?

- Use your Knowledge Organiser booklet to revise key learning.
- Highlight sections of the booklet when you revise them, so that you know you are making progress through it.
- Copies of the booklet can be found on Teams. There is also an easier 'modified' version of the Knowledge Organiser booklet on Teams.
- You will be tested on different sections of your KO booklet, each week.

## What extra revision activities **could** I complete each week?

- Read your purple book and review/practice past questions and model answers.
- Complete new practice exam questions (available on Teams).
- Study past papers and model answers (available on Teams).
- Get a copy of the revision book 'My Revision Notes: WJEC Eduqas GCSE (9-1) History', which contains further useful knowledge, as well as practice and model answers.

## How can I get help and support?

- Ask your History teacher.
- See Mr Rainsley (Head of History).
- Look at the GCSE History resources on the BBC Bitesize website and BBC Teach videos etc.

**Contact:** [mrainsley@purbeck.dorset.sch.uk](mailto:mrainsley@purbeck.dorset.sch.uk)

## How am I assessed at GCSE?

- 30% NEA (Non-exam Assessment).
- 70% examination (two papers, which are equally weighted).

## What revision activities **must** I complete each week?

- Revise key media theories and concepts using the knowledge organisers.
- Revise examples and evidence from the set text booklets.

## What extra revision activities **could** I complete each week?

- Flash cards that contain theories, evidence, audience interpretations, context.
- Flash cards that contain information about each industry.
- Study and complete past papers – see the Eduqas website.

## How can I get help and support?

- Use the PowerPoints & resources on Teams
- Use the Eduqas Website for hints and Tips
- Use the range of YouTube videos available on the set texts by Mrs Fisher
- Ask Mrs Gregory and/or your Media Studies teacher

**Contact:** [vgregory@purbeck.dorset.sch.uk](mailto:vgregory@purbeck.dorset.sch.uk)



## **How am I assessed at GCSE?**

- 60% of your GCSE is coursework with one exam worth the remaining 40% (as below)
- 30% is Composition coursework: 1 *Free* composition and 1 *Set Brief* composition
- 30% is Performance coursework: 1 *Ensemble* performance and 1 *Solo* performance
- 40% is a Listening & Appraising exam at the end of Year 11; you will answer questions about music that is played to you
- Your revision activities should reflect this balance of performance, composition and appraising work

## **What revision activities must I complete each week?**

- Complete all home learning activities to the best of your ability in full
- A 20-30 minute practice session at least 4 days per week on your chosen instrument/voice, focussing on any technical exercises that your instrumental/vocal tutor has given you
- Musical vocabulary keyword revision – using the MADTSHIRT prompts you will be given
- Revise the theory concepts that we have covered in the lessons that week to ensure that they become embedded in your memory
- Be intentional when listening to music; consider the elements of music and the layers of music that have gone into constructing the piece of music you are listening to
- Attend at least one musical ensemble in school; Rock & Pop band on a Tuesday, Orchestra on a Monday or Choir on a Wednesday

## **What extra revision activities could I complete each week?**

- You could use the ZigZag booklets or the CGP Books to complete additional practice activities
- You could watch YouTube tutorials for developing your understanding and skill in any area of the music course; David Bennett, The Musicologist and Ryan Leach are three good YouTube channels to engage with
- Listen to a Music podcast eg. Switched on Pop
- Use Teoria.com and MusicTheory.net for ear training and music theory development
- Go to live music events
- Use Soundtrap or any other DAW to develop your composition and editing skills
- Use the Eduqas Revision website

## **How can I get help and support?**

- Speak with Mr Burns
- Speak with your instrumental/vocal tutor

## **Contact:**

[sburns@purbeck.dorset.sch.uk](mailto:sburns@purbeck.dorset.sch.uk) – Head of Music

### How am I assessed at GCSE?

- Your sketchbook and photographs are marked towards your overall GCSE grade.
- Your course is 100% coursework.
- We use OCR's assessment objectives of Develop/Explore/Record/Present to mark your work, this includes writing and photographic prints or videos.
- You will produce two sketchbooks and final pieces for gallery shows.
- Instead of 'revision' you should complete the following weekly activities to add to your coursework...

### What revision activities **must** I complete each week?

- You should produce a double sketchbook page every week.
- Take photos – these could be copies of your photographers' work or your own ideas developing on.
- Write photoshoot plans.
- Write about your own work – use the guidance sheets provided.
- Create research/analysis pages about photographers to inspire your project – use the guidance sheet provided.
- Conduct further visual research to help inspire your ideas – look on gallery websites, the purbeckarts Instagram, follow #gcsephoto on Instagram, listen to podcasts, visit galleries – try to be conscious about accessing the arts to widen your horizons.

### What extra revision activities **could** I complete each week?

- You could create further photographs to practice your technical skills.
- You could watch YouTube tutorials for new processes or editing techniques.
- You could email any images or typed work to our Arts Technician.
- You could email you teachers asking them to prepare materials, props or lights for your lesson.

### How can I get help and support?

- Email staff at the below addresses.
- Come to the Art Department before school, during break/lunch or after school.
- Attend Wednesday Art club.

#### **Contact:**

[aclarke@purbeck.dorset.sch.uk](mailto:aclarke@purbeck.dorset.sch.uk) – Head of Art and Photography

[mchengadu@purbeck.dorset.sch.uk](mailto:mchengadu@purbeck.dorset.sch.uk) – Teacher of Art

[swatson@purbeck.dorset.sch.uk](mailto:swatson@purbeck.dorset.sch.uk) – Teacher of Art and Photography

[jlummes@purbeck.dorset.sch.uk](mailto:jlummes@purbeck.dorset.sch.uk) – Arts Technician

## How am I assessed at GCSE?

- **Physics Paper 1** (Topics P1 Conservation & dissipation of energy, P2 Energy transfer by heating, P3 Energy resources, P4 Electric circuits, P5 Electricity in the home, P6 Molecules & matter, P7 Radioactivity) - 100 marks, 50% of GCSE, length of paper 1hr 45mins
- **Physics Paper 2** (Topics P8 Forces in balance, P9 Motion, P10 Force & motion, P11 Force & pressure, P12 Wave properties, P13 Electromagnetic waves, P14 Light, P15 Electromagnetism, P16 Space) - 100 marks, 50% of GCSE, length of paper 1hr 45mins
- **Note – Paper 2 may also contain aspects of P1 – P7, as these are considered the fundamental aspects of GCSE Physics.**
- Both papers will contain questions on the required practical activities covered and will consist of multiple choice, structured, closed short answer and open response questions.

## What revision activities **must** I complete each week?

- Seneca home learning – fortnightly
- Past Paper question booklet – weekly

## What extra revision activities **could** I complete each week?

- Use the resources referenced in the Science Online Learning Guide – this is available in the S12 Students area of Teams  
<https://purbeckschool.sharepoint.com/:w:/s/S11Students/ETVhuuzeqHVDmJIYJPFRQ6sBBBRgbqNvZ761c6kNBbVrOQ?e=Wq3x1l>
- Revision using CGP revision guide is recommended (Title: AQA GCSE Physics).
- [www.freesciencelessons.co.uk](http://www.freesciencelessons.co.uk) contains useful revision videos for each topic, as well as downloadable workbooks.
- Practice past paper questions and self-mark using the mark schemes. Using mark schemes to learn how to word answers and how to interpret questions is a very good way to revise. These can be found on the AQA website: [www.aqa.org.uk/subjects/science/gcse/physics-8463/assessment-resources](http://www.aqa.org.uk/subjects/science/gcse/physics-8463/assessment-resources)

## How can I get help and support?

- Contact your Physics teacher.
- Contact Mr Nicolaides (Head of Physics).
- Attend Seneca support sessions after school.

**Contact:** [mnicolaides@purbeck.dorset.sch.uk](mailto:mnicolaides@purbeck.dorset.sch.uk)

## How am I assessed at GCSE?

- Our exam paper is Religious Studies AQA specification A.
- You will sit two exams. Each exam is 1 hour 45 minutes.
- Paper 1 Religions: you need to know Jewish and Christian beliefs and practices (how they act).
- Paper 2 Themes: you need to revise human rights, Matters of Life, human relationships, crime and punishment.

## What revision activities **must** I complete each week?

- Revise your knowledge organiser.
- Create revision flashcards on your knowledge organiser questions.
- Complete the work booklet questions.

## What extra revision activities **could** I complete each week?

- Plan and write some exam questions.
- Make mind maps/revision summaries/cards for each area using the revision booklets provided.
- Go on BBC Bitesize AQA Religious Studies A Christianity and Judaism and complete the activities.
- Go on the AQA exam website and read the mark schemes and examiners reports.

## How can I get help and support?

- Please go and see your subject teacher.
- Come to Study Plus (every Tues – Thurs 3.10 – 4.10pm in café)
- Attend lunch time rapid revision sessions every Tuesday in S18

**Contact:** [ewetherall@purbeck.dorset.sch.uk](mailto:ewetherall@purbeck.dorset.sch.uk)

## How am I assessed at GCSE?

- **Listening** (25%):
  - Foundation Tier: 35 minutes, 40 marks
  - Higher Tier: 45 minutes, 50 marks
- **Speaking** (25%) Non-exam assessment, 60 marks:
  - Foundation Tier: 7 – 9 minutes + preparation time (10 – 12 minutes)
  - Higher Tier: 10 – 12 minutes + preparation time (10 – 12 minutes)
- **Reading** (25%) 60 marks:
  - Foundation Tier: 45 minutes
  - Higher Tier: 1 hour
- **Writing** (25%):
  - Foundation Tier: 1 hour 5 minutes, 50 marks
  - Higher Tier: 1 hour 20 minutes, 60 marks

## What revision activities **must** I complete each week?

- Revision for your weekly knowledge vocabulary quizzing or homework sheet.
- Complete weekly Language Gym activities set.
- Learn your Speaking Booklet answers.
- Learn your Set Writing Expressions for the writing paper.

## What extra revision activities **could** I complete each week?

- Language Gym additional tasks – use the game room to search for topics or grammar points that you feel less confident with.
- Do timed writing tasks in exam conditions and give them to your teacher for feedback.
- Use Exam Practice Workbooks to practice topic specific exam questions. (We recommend the **CGP** GCSE AQA Complete Revision and Practise guide).

## How can I get help and support?

- Please go and see your Spanish teacher.
- Come to Study and Revision sessions (see club timetables)
- Consult the BBC Bitesize website: [www.bbc.co.uk/bitesize/subjects/zhsvr82](http://www.bbc.co.uk/bitesize/subjects/zhsvr82)

**Contact:** [lwest@purbeck.dorset.sch.uk](mailto:lwest@purbeck.dorset.sch.uk)



The Purbeck School  
Achieving Excellence Together

# STUDENT PLANNER



Date	Subject and task	Due date	Done
A MON 4 <sup>TH</sup> SEPT			
A TUES 5 <sup>TH</sup> SEPT			
A WEDS 6 <sup>TH</sup> SEPT			
A THURS 7 <sup>TH</sup> SEPT			
A FRI 8 <sup>TH</sup> SEPT			
B MON 11 <sup>TH</sup> SEPT			
B TUES 12 <sup>TH</sup> SEPT			
B WEDS 13 <sup>TH</sup> SEPT			
B THURS 14 <sup>TH</sup> SEPT			
B FRI 15 <sup>TH</sup> SEPT			

Date	Subject and task	Due date	Done
A MON 18 <sup>TH</sup> SEPT			
A TUES 19 <sup>TH</sup> SEPT			
A WEDS 20 <sup>TH</sup> SEPT			
A THURS 21 <sup>ST</sup> SEPT			
A FRI 22 <sup>ND</sup> SEPT			
B MON 25 <sup>TH</sup> SEPT			
B TUES 26 <sup>TH</sup> SEPT			
B WEDS 27 <sup>TH</sup> SEPT			
B THURS 28 <sup>TH</sup> SEPT			
B FRI 29 <sup>TH</sup> SEPT			



Date	Subject and task	Due date	Done
A MON 2 <sup>ND</sup> OCT			
A TUES 3 <sup>RD</sup> OCT			
A WEDS 4 <sup>TH</sup> OCT			
A THURS 5 <sup>TH</sup> OCT			
A FRI 6 <sup>TH</sup> OCT			
B MON 9 <sup>TH</sup> OCT			
B TUES 10 <sup>TH</sup> OCT			
B WEDS 11 <sup>TH</sup> OCT			
B THURS 12 <sup>TH</sup> OCT			
B FRI 13 <sup>TH</sup> OCT			

Date	Subject and task	Due date	Done
A MON 16 <sup>TH</sup> OCT			
A TUES 17 <sup>TH</sup> OCT			
A WEDS 18 <sup>TH</sup> OCT			
A THURS 19 <sup>TH</sup> OCT			
A FRI 20 <sup>TH</sup> OCT			

## HALF TERM

Date	Subject and task	Due date	Done
<b>B MON 30<sup>TH</sup> OCT</b>			
<b>B TUES 31<sup>ST</sup> OCT</b>			
<b>B WEDS 1<sup>ST</sup> NOV</b>			
<b>B THURS 2<sup>ND</sup> NOV</b>			
<b>B FRI 3<sup>RD</sup> NOV</b>			
<b>A MON 6<sup>TH</sup> NOV</b>			
<b>A TUES 7<sup>TH</sup> NOV</b>			
<b>A WEDS 8<sup>TH</sup> NOV</b>			
<b>A THURS 9<sup>TH</sup> NOV</b>			
<b>A FRI 10<sup>TH</sup> NOV</b>			

Date	Subject and task	Due date	Done
<b>B MON 13<sup>TH</sup> NOV</b>			
<b>B TUES 14<sup>TH</sup> NOV</b>			
<b>B WEDS 15<sup>TH</sup> NOV</b>			
<b>B THURS 16<sup>TH</sup> NOV</b>			
<b>B FRI 17<sup>TH</sup> NOV</b>			
<b>A MON 20<sup>TH</sup> NOV</b>			
<b>A TUES 21<sup>ST</sup> NOV</b>			
<b>A WEDS 22<sup>ND</sup> NOV</b>			
<b>A THURS 23<sup>RD</sup> NOV</b>			
<b>A FRI 24<sup>TH</sup> NOV</b>			

Date	Subject and task	Due date	Done
<b>B MON 27<sup>TH</sup> NOV</b>			
<b>B TUES 28<sup>TH</sup> NOV</b>			
<b>B WEDS 29<sup>TH</sup> NOV</b>			
<b>B THURS 30<sup>TH</sup> NOV</b>			
<b>B FRI 1<sup>ST</sup> DEC</b>			
<b>A MON 4<sup>TH</sup> DEC</b>			
<b>A TUES 5<sup>TH</sup> DEC</b>			
<b>A WEDS 6<sup>TH</sup> DEC</b>			
<b>A THURS 7<sup>TH</sup> DEC</b>			
<b>A FRI 8<sup>TH</sup> DEC</b>			

Date	Subject and task	Due date	Done
B MON 11 <sup>TH</sup> DEC			
B TUES 12 <sup>TH</sup> DEC			
B WEDS 13 <sup>TH</sup> DEC			
B THURS 14 <sup>TH</sup> DEC			
B FRI 15 <sup>TH</sup> DEC			

## CHRISTMAS HOLIDAYS